

# MAIL HOOK

SAN DIEGO DIVISION, PSR-NMRA

OCTOBER 2005

## Director's Report

By Don Fowler

**REMEMBER:** Old model railroaders never die. They just lose track.

I'd like to start off by thanking all of you for taking the time to vote in our recent election. I appreciate your support and intend to give my best effort to the membership of our Division.

We had a great time at the Buena Park convention in September. Our thanks to the Cajon Division for putting in a lot of effort and doing a great job. There were many good clinics, a great choice of goodies at the Chinese Auction and Train Show, some outstanding model railroads on the layout tours, and an opportunity to visit with old friends. If you didn't attend, you missed a great time.

While at the Buena Park convention, our committee signed up a record sixty for San Diego Division's "Back to the Future in 2006" scheduled for October 11 - 15, 2006 to be held right here in San Diego. Plans are already under way for a giant train show, swap meet, auction, new clinics, layout/prototype tours, and more. Sign up by March 31, 2006 for \$50.00 before the next rate increase takes effect. Better yet, sign up a friend

as well. This convention is shaping up to be one of the best ever! Stay tuned for more details.

Another great event I want to tell you about is the upcoming Fall Meet at the San Diego Model Railroad Museum on November 12, 2005. There will be a pot-luck, model contest judging, clinics, and an auction. Bring some food to share, a favorite model, and something to donate for the auction. We're going to have a lot of fun so don't miss out!

As your new director, I am looking for new ways to support our Division. Three issues immediately come to mind. The first is to better serve the needs of the current membership. What could we do to enhance the role of NMRA in our area? The second is to generate more interest and involvement from our membership. Are you taking full advantage of the opportunities currently provided? The third is to expand our membership. There are many model railroaders who are not involved with our Division right now. They are missing out on the fellowship, expertise, and support that we currently provide to each other. We must also target newcomers of all ages so that our hobby can grow and endure into the future.

I would like to present you with three personal challenges for this year:

- 1) Tell me what activities and/or services you'd like from your Division.
- 2) Find the time to volunteer to help your Division in some way.
- 3) Sponsor/mentor/enroll a new NMRA member this year.

When you get involved, the dividends are huge! Help me develop our Division and share the World's Greatest Hobby. Don't forget that November 4th is "Take a Model Train to Work Day". I look forward to seeing you soon and hearing all about your thoughts and ideas.

### In This Issue

Director's Report.....	1
Layout Meets & Tours.....	2
Superintendent's Report.....	3
Layout Tour Locations.....	4
Events Wall Calendar.....	5
PSR 2006 Convention Registration Form.....	6
Events & Schedules.....	8
Club and Train Store Info.....	9

## Layout Meets & Tours

By David Balsler, Layout Tour Chairman

November and December will be a salute to the Rio Grande Southern in two scales by two of the best model railroaders around. Joel Shank will be opening his magnificent Sn3 layout in Brawley on November 19th and Steve Harris of Valley Center will welcome us back to his splendid rendition of the RGS in HOn3 on December 10th. Both railroads share some similarities in that each one resides in it's own building and each one has been a feature article in a magazine. Joel's

layout was featured in the October 2001 issue of Railroad Model Craftsman, and Steve's layout was in the November 2004 issue of Model Railroader.

I think these are two of the best model railroads in our area and should not be missed. Although Joel lives in Brawley and is about a two hour trip it is well worth your time. Get together with your pals and plan a roadtrip starting with breakfast and if you don't think his railroad was worth the visit I will buy your breakfast!

We have some great layout tours planned for 2006, with a real mix of Scales and Railroads.

**January:** we will be making our annual pilgrimage to Don Fowler's home in Santee to see his evolving N - Scale Southern Pacific. Don models the SP during the 1970 to 1975 period between West Colina and Colfax, California with guest appearances by other West Coast railroads. Features include sound systems, operating grade crossings, block signals, and night lighting. There is a great scene of Mojave, numerous tunnels, a stream, and since our visit last year Don and his crew have added many new features that need to be seen. This one of the finest N - Scale railroads around so make plans to visit and enjoy Dons hospitality.



Ok, What's the Scale? - George Boggs

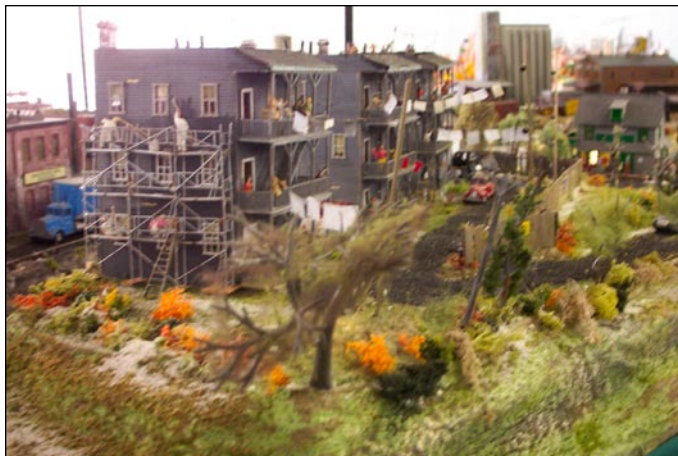
**February:** we will visit the "Gopher Canyon Line", the outdoor railroad of Steve Sidensticker in San Diego. Just because this layout is outside don't dismiss it as being a toy train set running in the grass. This is a "scale" model railroad with precise trackwork, detailed rolling stock, and locomotives even the rivet counters will appreciate. Steve has regular operating sessions, which is unique for a railroad of this type (they also give you some appreciation for the jobs of real railroaders - following a "G" scale train can give you a workout). Some new trackwork has just been installed, and seeing the freight trains run without hesitation through long turnouts is pretty neat. Bring your hat!

**March:** I'm looking for either a tour volunteer, or a good road trip for March.

**April:** this will be the first viewing of a railroad we have not seen before. John Constance lives in Cardiff and is modeling the Westside Lumber Co. in Sn3. The railroad is in the development stage but a Shay or a Climax will be hauling a load of logs from the camp to the mill. John is hand laying all his track and uses PFM units to let you hear the geared locomotives strain up the grades. Projects under construction will let you see the railroad before it is complete and enjoy Johns craftsmanship.

I would like to fill out the balance of the year before the convention in September with layouts we have not visited before, so if you are ready to take the "Tour Challenge" let me know and you can be on the schedule.

NOTE: Layout tours start at noon, so for you



City life, anyone? - Frank Tepedino

early birds please don't show up at breakfast time (you know who you are) because the host will be drinking coffee and cleaning track and

trying to find that short in his wiring!



## From the Front Office Ben Sevier, Superintendent

Another year is almost over, another PSR convention has gone (Buena Park was great fun, as those who went will tell you), and we're deep into planning for next year's convention here in San Diego. A hotel has been picked as the convention site, we've signed up a Train Show venue, volunteers are working on lining up clinics, layout and prototype tours, things to do for the non-railroader spouses, and the many other things that are part of a great convention experience. At Buena Park members of the Convention committee staffed a booth touting the "Back to the Future in 2006" convention, and came away with 61 early-bird pre-registrations. Our own Barbara Hicke won the prize drawing held for the early registrants - she got a gift certificate to Reed's Hobby in La Mesa, which she immediately put to good use.

So, now you have a choice to make - register to come to the convention, or sign on to help out putting it on (or both)? Either way, you'll be doing your part to make it a success, and continue with the tradition of great conventions hosted by the San Diego Division. A copy of the registration form is included in this issue, with discounts for earlier registration - so, don't wait, send it in today!

In other areas it's also been a great year. We've visited some fantastic layouts, saw a number of great models, had a good time learning about railroading (model and prototype), and socialized with a great bunch of people. A number of "lone wolves" have begun to get involved, and are discovering the fun of interacting with others in this great hobby.

Next year, aside from the Convention, also promises to be a fun one. Dave Balsler has already lined up a number of layouts to visit as part of the layout tour program, and is working on several "road trips" to get us out of the immediate area. We're going to attempt to have more than one swap meet, and are working to involve the various clubs in our area in our events.

Speaking of clubs, they all seem to be going great guns (so to speak). The "Short Track RR at the Antique Gas & Steam Museum" (new name

for a group that has been very active for years) is coming along on their new permanent home at the AGY&S Museum in Vista, and the "North County Model Railroad Society" (used to be known as "North County Modular") is moving right along in their new home upstairs at the Boney's Supermarket in Oceanside - when you get a chance, drop by and see them (contact info in the club listings on page 9). And the clubs at the San Diego Model Railroad Museum aren't sitting idle, either. If you haven't been down there in a while, you're missing lots of changes - the San Diego MRR Club continues to throw lots of plaster and paint around as they work on scenery and structures, and the new mezzanine area of the La Mesa MRR club is open for viewing (lots of work still to be done there, of course). And the other clubs there continue with their plans. The Poway Station All-scale Modular Railroad club continues to show around the county, and is in the middle of deciding which way to go with DCC.

If you are interested in getting involved in a club, or just want to know what a club can do for your modeling, check out their websites or drop in on a meeting.

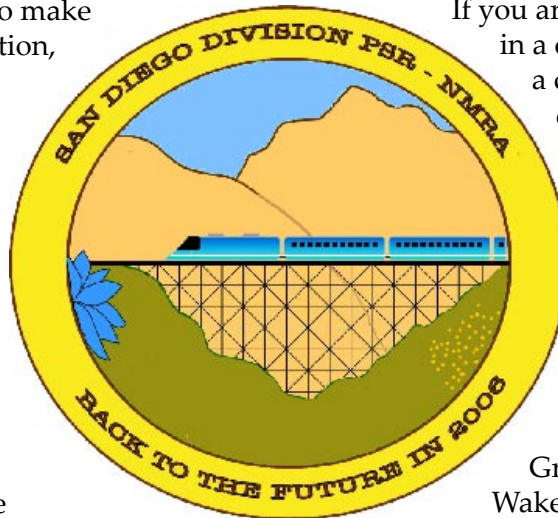
As the year comes to a close, I'd like to thank all those who have helped make this Division one of the most active and growing in the Pacific Southwest Region, including Don Fowler, Kim Fowler, George Boggs, Rodger Gredvig, Gary Robinson, Ron Wakefield, Dave Balsler, Bob Moore,

Chuck Hart, Ed Hatch, Jack Eireman,

just to name a few. And we should all appreciate those who have opened their homes and layouts to us for the layout tours during the year - Don Fowler, Burton Maxwell, Tom McCammit, Mike Colurasado, Max Schwanda, Jay Styron, John Sigurdson, Don Ham, Mike Comosinski, Frank Tepedino, Joel Shank, and Steve Harris. Each and every one had something to show, and teach. If you missed any of them, you've missed a lot.

Here's wishing each and everyone a safe and enjoyable holiday season, and I look forward to seeing you next year.

Remember, every day is a good day to model. And there's nothing better to model than a railroad!





## San Diego Model Railroad Museum

### LEGO CITY EXHIBIT NOV. 22-JAN. 15

What's more fun than model trains? Model trains and legos! Don't miss this amazing display featuring skyscrapers, bridges, people, and operating trains all created with legos. Exhibit will be on display Nov 22 - Jan 15, 2006. Call (619) 696-0199 for more information.

The San Diego Model Railroad Museum is located in the Casa de Balboa building in Balboa Park and is the largest exhibition of model railroading in North America measuring over 28,000 square feet. The Museum is open Tuesday through Friday, 11:00 a.m. to 4:00 p.m.; Saturday and Sunday, 11:00 a.m. to 5:00 p.m. Admission is \$5.00 -- Children under 15 are FREE. For more information about events at the Museum call (619) 696-0199 or visit our website at [www.sdmodelrailroadm.com](http://www.sdmodelrailroadm.com).

### MONTHLY LAYOUT MEET LOCATIONS

**Joel Shank** (November) - The November Tour will be at #5005 Hwy 115, Brawley. To get there, go EAST on I-8 into El Centro, then go north on US-111 until you come to S-78 in Brawley. Turn EAST on S-78 for 3.5 miles until Hwy 115. Go NORTH on 115 to #5005 and look for a house on the LEFT. Join us for a road trip, meeting at the Denny's Restaurant at 1202 West Main in El Cajon (take the Main Street exit off I-8 and go West about a block) for breakfast about 9:00am, then heading east out to Joel's. If you have extra seats, please make them available to those who would rather not drive. See you there!

**Steve Harris** (December) - 15236 Woods Valley Road, Valley Center, CA. (760) 749-0423  
I-15 to Old Castle Rd exit. Watch the signs carefully at the exit. Go EAST at the bottom of the off ramp, than a quick right/south on Champagne Blvd., (Old 395) then after a hundred yards, a left /east on Old Castle Rd. Old Castle becomes Lilac, but you probably won't know it. Go 7.1 miles to Sierra Rojo Rd. Turn right/west on Sierra Rojo Rd. Go up the hill .4 miles and look for the HARRIS

sign at a little paved lane through a grove. Turn right/north and go a little over .3 mile ALL THE WAY to the end of the lane.

**Don Fowler** (January) - 10768 Sayers Court, Santee, CA 92071. (619) 258-3529

Go East on SR 52, exit at Mast Blvd. Turn left on Mast and proceed for 3.3 Miles. Turn left on Magnolia and proceed for 2 blocks. Turn right on 2nd street and proceed for 2 blocks. Turn left on Cleary and proceed 1 block. Turn left on Holborn and proceed for 2 blocks. Turn right on Sayers Court and proceed to 10768. The street is a cul-de-sac, and parking can be tight.

**Steve Seidensticker** (February) - 2223 Commonwealth Ave, San Diego (619) 283-2849.

Steve and Jan live in the very south end of North Park. To get there take 805 north or south to University avenue. Then go SOUTH (sharp left) on Boundary (parallels 805 on the west side) about 1.5 miles. Turn RIGHT on Commonwealth. 2223 is on the left side about half a block before the street dead ends.

### Online - Web Sites of Interest

Train Net: [www.trainnet.org](http://www.trainnet.org)

Rail Pictures: <http://www.railpictures.net/>

NMRA: [www.nmra.org](http://www.nmra.org)

PSR: <http://www.psr-nmra.org/>

Cajon Country 2005 Convention: [www.getnet.com/~dickg/nmra/psr/2005conv.html](http://www.getnet.com/~dickg/nmra/psr/2005conv.html)

San Diego Division: [www.getnet.net/~dickg/nmra/sdiego/sdiego.html](http://www.getnet.net/~dickg/nmra/sdiego/sdiego.html) (PSR) or

[www.sandiegodivision.org](http://www.sandiegodivision.org) (local)

Cajon Division: [www.cajondiv.org](http://www.cajondiv.org)

San Diego Model Railroad Museum: [www.sdmodelrailroadm.com](http://www.sdmodelrailroadm.com)

San Diego Rail Sites: [www.sandiegorail.com/index.html](http://www.sandiegorail.com/index.html)

Carrizo Gorge Railway: <http://www.carrizogorgerailway.com/>

The Overland Trail: [www.overlandtrail.com](http://www.overlandtrail.com)

## November 2005

## San Diego Division - Events

Sunday	Monday	Tuesday	Wednesday	Thursday	Friday	Saturday
		<b>1</b>	<b>2</b>	<b>3</b>	<b>4</b>	<b>5</b>
<b>6</b>	<b>7</b>	<b>8</b>	<b>9</b>	<b>10</b>	<b>11</b>	<b>12</b> Fall Meet SD MRRM 11:30 - 3:00
<b>13</b>	<b>14</b> Convention Planning Committee 7:00pm	<b>15</b>	<b>16</b>	<b>17</b>	<b>18</b>	<b>19</b> Layout Tour Joel Shank 8:30 - 3:00pm
<b>20</b>	<b>21</b>	<b>22</b>	<b>23</b>	<b>24</b> <i>Thanksgiving</i>	<b>25</b>	<b>26</b>
<b>27</b>	<b>28</b>	<b>29</b>	<b>30</b>			

## December 2005

				<b>1</b>	<b>2</b>	<b>3</b>
<b>4</b>	<b>5</b>	<b>6</b>	<b>7</b>	<b>8</b>	<b>9</b>	<b>10</b> Layout Tour Steve Harris 12:00 - 3:00
<b>11</b>	<b>12</b> Convention Planning Committee 7:00pm	<b>13</b>	<b>14</b>	<b>15</b>	<b>16</b>	<b>17</b>
<b>18</b>	<b>19</b>	<b>20</b>	<b>21</b>	<b>22</b>	<b>23</b>	<b>24</b>
<b>25</b> <i>Christmas</i>	<b>26</b>	<b>27</b>	<b>28</b>	<b>29</b>	<b>30</b>	<b>31</b>

## January 2006

<b>1</b> <i>New Year's Day</i>	<b>2</b>	<b>3</b>	<b>4</b>	<b>5</b>	<b>6</b>	<b>7</b>
<b>8</b>	<b>9</b> Convention Planning Committee 7:00pm	<b>10</b>	<b>11</b>	<b>12</b>	<b>13</b>	<b>14</b> Layout Tour Don Fowler 12:00 - 3:00
<b>15</b>	<b>16</b>	<b>17</b>	<b>18</b>	<b>19</b>	<b>20</b>	<b>21</b>
<b>22</b>	<b>23</b>	<b>24</b>	<b>25</b>	<b>26</b>	<b>27</b>	<b>28</b>
<b>29</b>	<b>30</b>	<b>31</b>				



# BACK TO THE FUTURE IN 2006

Pacific Southwest Region, NMRA® 2006 Convention

## OCTOBER 11 - 15, 2006

Presented by the San Diego Division, PSR, NMRA®  
 Ramada Inn and Conference Center, San Diego, California

Name(s)\*(1) \_\_\_\_\_ (2) \_\_\_\_\_

Address \_\_\_\_\_

City \_\_\_\_\_ State & ZIP \_\_\_\_\_

Phone \_\_\_\_\_ E-Mail\*\* \_\_\_\_\_

NMRA #: \_\_\_\_\_ PSR #: \_\_\_\_\_ Registration Date: \_\_\_\_\_

Region & Home Division \_\_\_\_\_ Primary Scale \_\_\_\_\_

\*As you want it to appear on your badge \*\*E-Mail is the preferred communication method

<u>TYPE</u>	<u>QTY</u>	<u>EACH</u>	<u>TOTAL</u>
NMRA Adult Rail (NMRA Member) before 4/1/06.....# _____	@	\$50.00	_____
NMRA Adult Rail (NMRA Member) after 3/31/06.....# _____	@	\$65.00	_____
NMRA Adult Rail (NMRA Member) after 8/19/06.....# _____	@	\$75.00	_____
Non-Rail, Spouse, or Adult Family Member, when accompanied by NMRA member .....# _____	@	\$40.00	_____
Youth (10-17, with paid adult) .....# _____	@	\$15.00	_____
Single Day – Indicate Day [ ] Thur [ ] Fri [ ] Sat.....# _____	@	\$30.00	_____
<b>Non-NMRA member surcharge</b> .....# _____	@	\$10.00	_____
Extra Fare from reverse (when posted) .....			_____
<b>Total</b>		<b>\$</b>	_____

Would you be interested in helping out while at the convention?  Yes  No, thanks

Would you willing to give a clinic?  Yes  No, thanks Topic: \_\_\_\_\_

Operating session interest?  Yes  No, thanks

Make checks payable to:

**San Diego Division**

Send registration form and payment to: Gary Robinson, PSR 2006 Registrar

2319 Conway Drive

Escondido, CA 92026

Registrar's contact information: Email: [grobbedobbie@yahoo.com](mailto:grobbedobbie@yahoo.com) Phone (760) 839-5877

**Convention Hotel:** Ramada Inn & Conference Center, 5550 Kearny Mesa Road, San Diego, CA 92111

**Reservations:** (800) 447-2637 - [http://www.ramada.com/Ramada/control/advanced\\_search](http://www.ramada.com/Ramada/control/advanced_search) - Room Rate \$89.00

Registrar's Use Only: Cash \$ \_\_\_\_\_ Check \$ \_\_\_\_\_ # \_\_\_\_\_ Date: \_\_\_\_/\_\_\_\_/\_\_\_\_  
 Registration # \_\_\_\_\_ Posted: \_\_\_\_/\_\_\_\_/\_\_\_\_

**Cancellation policy:**

Full refund, less \$5.00 fee per registrant, when requested in writing (or email) before September 1, 2006



## SAN DIEGO DIVISION STAFF

Director:	<b>Don Fowler</b>	619 258-3529	donald.fowler@sdsheriff.org
Superintendent:	<b>Ben Sevier</b>	858 538-9863	bwsevier@sbcglobal.net
Chief Clerk/Paymaster:	<b>Don Fowler</b>	619 258-3529	donald.fowler@sdsheriff.org
Achievement Program:	<b>Ed Hatch</b>	858 274-2283	
Clinics:	<b>Don Fowler</b>	619 258-3529	donald.fowler@sdsheriff.org
Club Liason:	<b>Jack Eiermann</b>	858-487-8449	jceiermann@msn.com
Contests:	<b>Rodger Gredvig MMR #218</b>	858 571-7118	pgredvig@nethere.net
Convention:	<b>Ben Sevier</b>	858 538-9863	bwsevier@sbcglobal.net
Layout Tours:	<b>Dave Balser</b>	760 436-6139	dbalser@adelphia.net
Mail Hook Editor:	<b>Ben Sevier</b>	858 538-9863	bwsevier@sbcglobal.net
Meets:	<b>Milt Perkins</b>	858 748-7995	mep Perkins@cox.net
Member Aid:	<b>Bob Schimmel MMR #193</b>	858 273-8511	sfsuperchief@aol.com
Membership:	<b>Gary Robinson</b>	760 839-5877	grobbiedobbie@yahoo.com
Nominations:	<b>Chuck Hart</b>	858 748-6816	pce@cox.net
Publicity:	(vacant)		

### Mail Hook

The "Mail Hook" is the official publication of the San Diego Division, Pacific Southwest Region, National Model Railroad Association (NMRA®), and is published quarterly in San Diego, California. The "Mail Hook" is available to all members of the NMRA® who live in San Diego and Imperial Counties.

**Responsibility:** Except for official reports, all opinions expressed are those of the authors, and do not necessarily represent those of the San Diego Division or its parent organizations.

**Subscriptions:** The "Mail Hook" is available by subscription at the following rates: \$6/year for NMRA® members, \$10/year for non-NMRA® members, and is mailed first class.

**Delivery:** The "Mail Hook" is available in hard copy (paper) format through subscription and at San Diego Division events. Normal distribution is through email delivery or on the Division and PSR websites.

**Submissions:** Contributions of articles or photos on any railroad or model railroading topic of interest to the membership are welcome. There is no compensation, but published articles can be credited to the NMRA® Author Achievement Certificate. If you are interested in submitting articles, event information or other information of interest to members of the Division, please follow these guidelines:

1. Preferred method is by email to the editor, with the submission attached as a text document. Also accepted are: text document on floppy disk, printout from laser or ink jet printer, or typed using new ribbon.

2. Keep in mind that submissions may be edited for length or formatting, or not used at the discretion of the editor.

3. Submission deadlines: Jan 15, 2006, Apr 16, 2006, Jul 16, 2006, Oct 15, 2006

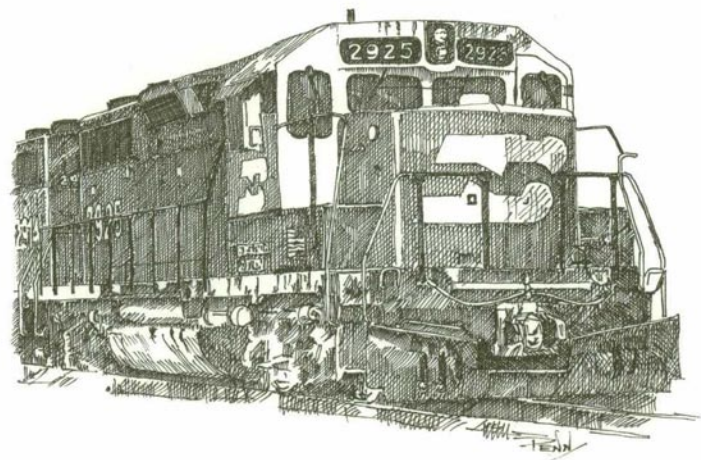
4. If you wish submission materials returned (i.e., photos), please send a stamped, self addressed envelope.

### Clinicians Needed!

We are currently compiling a resource list of members who are willing to provide training on various aspects of model railroading to be provided at meets, shows and conventions. General topics may include bench work, track, electronics, scenery, operations, engines & rolling stock, maintenance, history, or any other related topics.

There are many talented modelers within our Division who have developed or refined many techniques and skills. In order to expand our membership and support each other, these skills need to be shared.

If you would like to contribute your talents to help support our hobby, please contact our new Clinic Chair Don Fowler for further information. We welcome experienced clinicians and newcomers as well. Assistance is available for developing presentations if desired. The more you invest in our Division, the more you'll get out of model railroading.



## SCHEDULE OF PSR-NMRA EVENTS

### November 2005

- 12 **SD Division Fall Meet** - San Diego Model Railroad Museum, Balboa Park
- 19 Sat 12:00 noon - Monthly Layout Meet - Joel Shank, Brawley (road trip)

### December 2005

- 3 & 4 Sat & Sun - GATS - membership table
- 10 Sat 12:00 noon - Monthly Layout Meet - Steve Harris, Valley Center

### January 2006

- 14 San Diego Division Layout Tour. Don Fowler, Santee. Directions are available in the Mail Hook online at [www.trainnet.org](http://www.trainnet.org)

### February 2006

- 11 San Diego Division Winter Meet & Annual Swap Meet. Visit [www.sandiegodivision.org](http://www.sandiegodivision.org) for more information, or watch for the announcement flyer in the mail.
- 18 San Diego Division Layout Tour. Steve Seidensticker, North Park. Directions in the October 2005 issue of the "Mail Hook"

### March 2006

- 18 San Diego Division Layout Tour. - TBA More info and directions available in the Mail Hook online at [www.sandiegodivision.org](http://www.sandiegodivision.org).

### April 2006

- 8 San Diego Division Layout Tour. John Constance, Cardiff. Directions are available in the October 2005 issue of the "Mail Hook) or online at [www.sandiegodivision.org](http://www.sandiegodivision.org)

### May 2006

- 6 San Diego Division Spring Meet Visit [www.sandiegodivision.org](http://www.sandiegodivision.org) for more information.
- 20 San Diego Division Layout Tour. TBA June 2006
- 10 San Diego Division Layout Tour. TBA More info and directions available in the Mail Hook online at [www.sandiegodivision.org](http://www.sandiegodivision.org)

### July 2006

- 2 to 9 NMRA Convention. Philadelphia, PA <http://www.nmra.org/2006/> The Mid-Eastern Region hosts Independence Junction
- 15 San Diego Division Layout Tour. TBA More info and directions available in the Mail Hook online at [www.sandiegodivision.org](http://www.sandiegodivision.org)

### August 2006

- 12 San Diego Division Summer Meet & Picnic. Visit [www.sandiegodivision.org](http://www.sandiegodivision.org) for more information.

### October 2006

- 11 to 15 Back to the Future in 2006 PSR Convention - Al Bhar Shrine & Ramada Inn, San Diego, CA. Visit [www.sandiegodivision.org](http://www.sandiegodivision.org) for more information, or the PSR website online at [www.trainnet.org](http://www.trainnet.org).

### November 2006

- 4 San Diego Division Fall Meet. Visit [www.sandiegodivision.org](http://www.sandiegodivision.org) for more information, or the Mail Hook online at [www.trainnet.org](http://www.trainnet.org).

### Other Events of Interest

#### December 2005

- 10, 11, 17, 18 Orange Empire Railway Museum 21st Annual Santa Christmas Train. 2201 South "A" St. Perris CA 17 miles south of Riverside on I-215. (909) 943-3020, [www.oerm.org](http://www.oerm.org). Admission is \$8 for adults, \$6 for children 5-11, free for kids under 5. Parking is always free.

#### January 2006

- 7, 8 Great Western & Atlantic Trainshow. 11am -5 pm. Anaheim Convention Center, Katella Blvd., Anaheim. \$8.00 [www.gats.com](http://www.gats.com)
- 21 Steam Locomotive Restoration Project. Pacific Coast Modular Club Exhibit, 11am-4pm. San Bernardino County Museum, 2024 Orange Tree Lane. California Av. @ 10 Freeway. Redlands free more info (909) 307-2669 [www.pctrainclub.org](http://www.pctrainclub.org)

#### February 2006

- 25 Great Western & Atlantic Trainshow. 11am -5 pm. Pomona, CA \$8.00 [www.gats.com](http://www.gats.com)

#### March 2006

- 4 OERM Spring Railroadiana Swap Meet. 9 AM - 2 PM Orange Empire Railway Museum 2201 S. "A" Street, Perris, CA Admission: \$5; (included with all-day pass for trolley and train rides, \$10 adults, \$9 ages 5-11) Details at: [www.oerm.org](http://www.oerm.org) web site
- 18 Great Western & Atlantic Trainshow. 11am -5 pm. Costa Mesa, CA. \$8.00 [www.gats.com](http://www.gats.com)



## Model Railroad Clubs in San Diego

### San Diego Model Railroad Museum

Balboa Park, San Diego

Info: [www.sdmodelrailroadm.com](http://www.sdmodelrailroadm.com)

### La Mesa Model Railroad Club (HO)

Info: [LaMesaClub@att.net](mailto:LaMesaClub@att.net)

### San Diego 3-Railers (O)

Info: (619) 690-4358

### San Diego Model Railroad Club (HO & O)

Info: [www.sdmrrc.org](http://www.sdmrrc.org)

### San Diego Society of N Scale (N)

Info: [www.sdsons.org](http://www.sdsons.org)

### North County Model Railroad Society (HO, N)

Oceanside

Info: (760) 746-4779

### Poway Station Model Railroad Club

Old Poway Park, Poway

Info: [www.powaystation.org](http://www.powaystation.org)

### Short Track RR at the Antique Gas & Steam

Engine Museum

2040 N. Santa Fe

Vista, CA 92083

760-941-1791

Info: [Modeltrains@agsem.com](mailto:Modeltrains@agsem.com)

If you would like your club listed, or have news of interest, contact the Club Liason, San Diego Division

## Support Your Local Train Stores!



**Paul & Julie Kluth**  
13451 Community Road  
Poway, CA 92064  
PH. (858) 513-6590 Fax (858) 513-6579

## VALUE CRAFT INC.

Rick Wiese

342 W. El Norte Pkwy.  
Escondido, CA 92026  
Phone: (760) 747-9222  
Fax: (760) 747-9224

3825 Plaza Drive, #501  
Oceanside, CA 92054  
Phone: (760) 758-9233  
Fax: (760) 758-9792

Orders: 1-800-642-9054  
Phone: 1-619-294-8372  
Fax: 1-619-294-3312

Rob Freeburn  
Owner



## Trains Are Good!

Railroad gifts & toys

[www.trainsaregood.com](http://www.trainsaregood.com)

2802 Juan Street #10 (Old Town)  
San Diego, CA 92110

## REED'S HOBBY SHOP

• Exclusively Trains •



*Steve Bovee*

all scales • craft kits • detail parts • scratch supplies  
books • repairs • custom painting • special orders welcome

8039 La Mesa Blvd.  
La Mesa, California 91941  
(619) 464-1672

[www.reeds-hobbies.com](http://www.reeds-hobbies.com)  
E-mail: [reeds@abac.com](mailto:reeds@abac.com)  
Fax: (619) 464-6087



## THE WHISTLE STOP model trains

since 1949  
"Your model railroad shop"  
HO & N Scale, Books, Videos

**SCOTT A. RHODES**

**(619) 295-7340**

3834 Fourth Avenue, San Diego CA 92103  
[www.thewhistlestopsandiego.com](http://www.thewhistlestopsandiego.com)



## San Diego Model Railroad Museum

World's Largest Operating Model Railroad Museum

1649 El Prado, Balboa Park

Open to the Public

Tuesday through Friday 11:00 - 4:00

Saturday - Sunday 11:00 - 5:00

Admission: Adults \$5, Students \$3, Seniors \$4

Military \$2.50, Tuesdays free to all

## Membership Application Pacific Southwest Region - National Model Railroad Association

Name \_\_\_\_\_ Date \_\_\_\_\_

Address \_\_\_\_\_

City \_\_\_\_\_ State \_\_\_\_\_ ZIP \_\_\_\_\_

Telephone (\_\_\_\_) \_\_\_\_\_ Email \_\_\_\_\_

Primary Scale \_\_\_\_\_ Date of Birth \_\_\_\_/\_\_\_\_/\_\_\_\_

New  Renewal  PSR # \_\_\_\_\_ NMRA # \_\_\_\_\_ Exp. Date \_\_\_\_\_

<u>Class of Membership</u>	<u>NMRA</u>	<u>PSR*</u>	<u>Both</u>
Regular	\$45.00 <input type="checkbox"/>	\$7.00 <input type="checkbox"/>	\$52.00 <input type="checkbox"/>
Youth (under 20)	\$30.00 <input type="checkbox"/>	\$2.00 <input type="checkbox"/>	\$32.00 <input type="checkbox"/>
Affiliate (no bulletin or local publications)	\$23.00 <input type="checkbox"/>	\$4.00 <input type="checkbox"/>	\$27.00 <input type="checkbox"/>
Family	\$ 9.00 <input type="checkbox"/>	\$1.00 <input type="checkbox"/>	\$10.00 <input type="checkbox"/>

\* You MUST be a member of the NMRA to be a PSR member

For information on NMRA activities, contact the San Diego Division Membership Chairman:

Gary Robinson, (760) 839-5877.

Please send this application and your check or money order made payable to "Pacific Southwest Region, NMRA".

Mail to: PSR-NMRA Membership, Gary Robinson, 2319 Conway Drive, Escondido, CA 92026



# M A I L H O O K

c/o Ben Sevier, Editor  
12793 War Horse Street  
San Diego, CA 92129



A quarterly publication of the **San Diego Division** of the **Pacific Southwest Region** of the **National Model Railroad Association**